

YOUR TRUSTED EYE DOCTOR

Vision loss often causes significant disability to the independent functioning of one's life. Preserve and protect your eyes and live a happier life

Cataracts and age-related macular degeneration (AMD) are two conditions that affect the elderly and are main causes of visual impairment in the world. Previously, a huge proportion of patients affected by these disease would suffer from irreversible vision loss. However, advancements in technology in cataract surgery and options of premium lenses such as multifocal lenses now allow one not only to regain vision, but also to see clearly at all distances without spectacles. Cataract surgery has evolved and is now a day procedure with minimal downtime. Developments in the understanding of AMD with new and improving treatments has evolutionised this previously blinding condition.

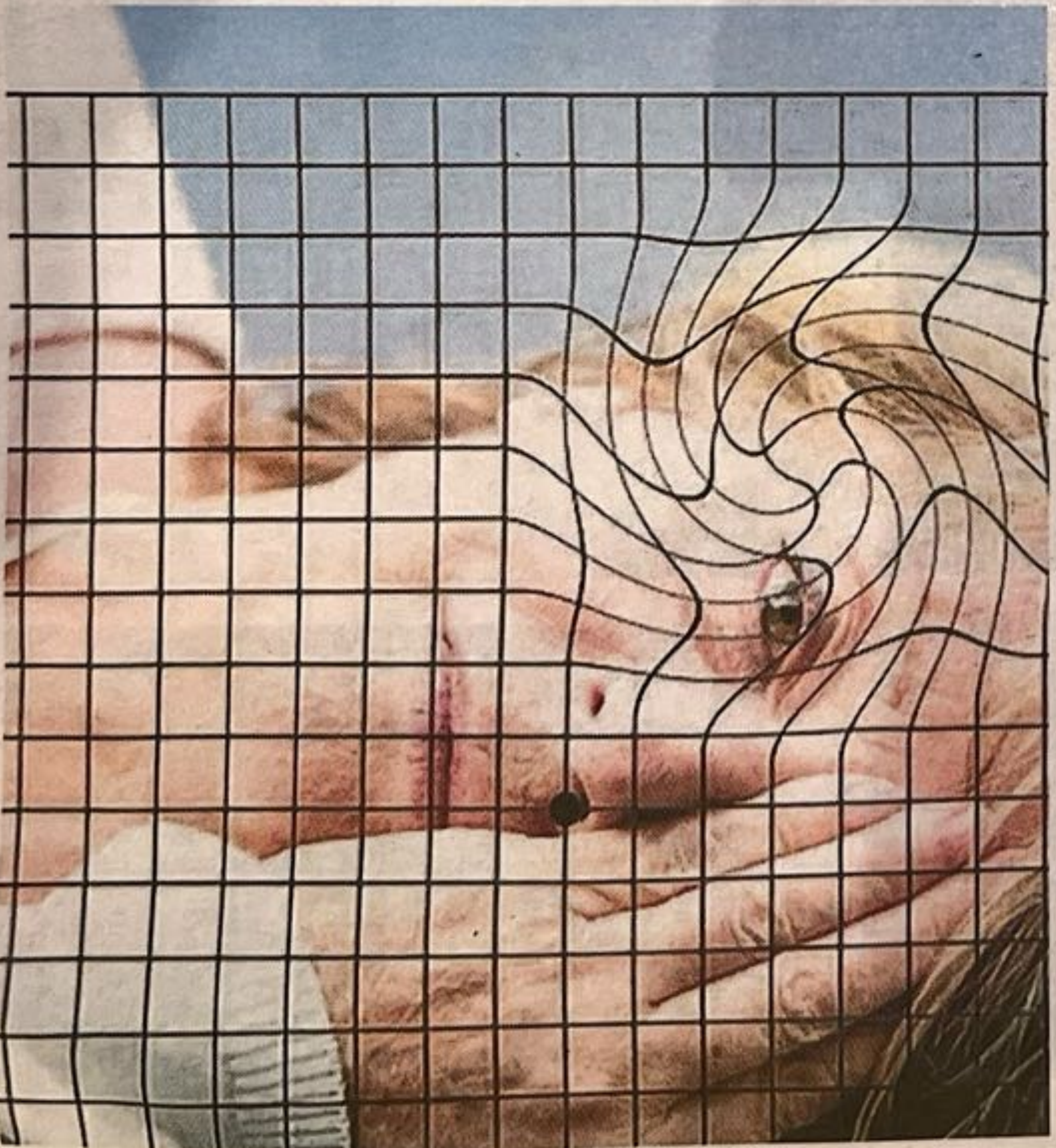
Therefore, if you're above the age of 60, it's important to screen your eyes and retina regularly to prevent the onset of worsening of eye conditions and to start treatment or preventative strategies where appropriate.

Ms Sharon Heng is a multilingual consultant ophthalmic surgeon with an NHS practice at the world-renowned Moorfields Eye Hospital. She's a specialist in retina diseases and is currently the clinical lead of the medical retina digital clinics at Moorfields Eye Hospital.

Ms Heng's PhD on preventative therapy in age-related macular degeneration formed pivotal laboratory studies and the first clinical study on the 2RT nanosecond laser in preventing AMD.

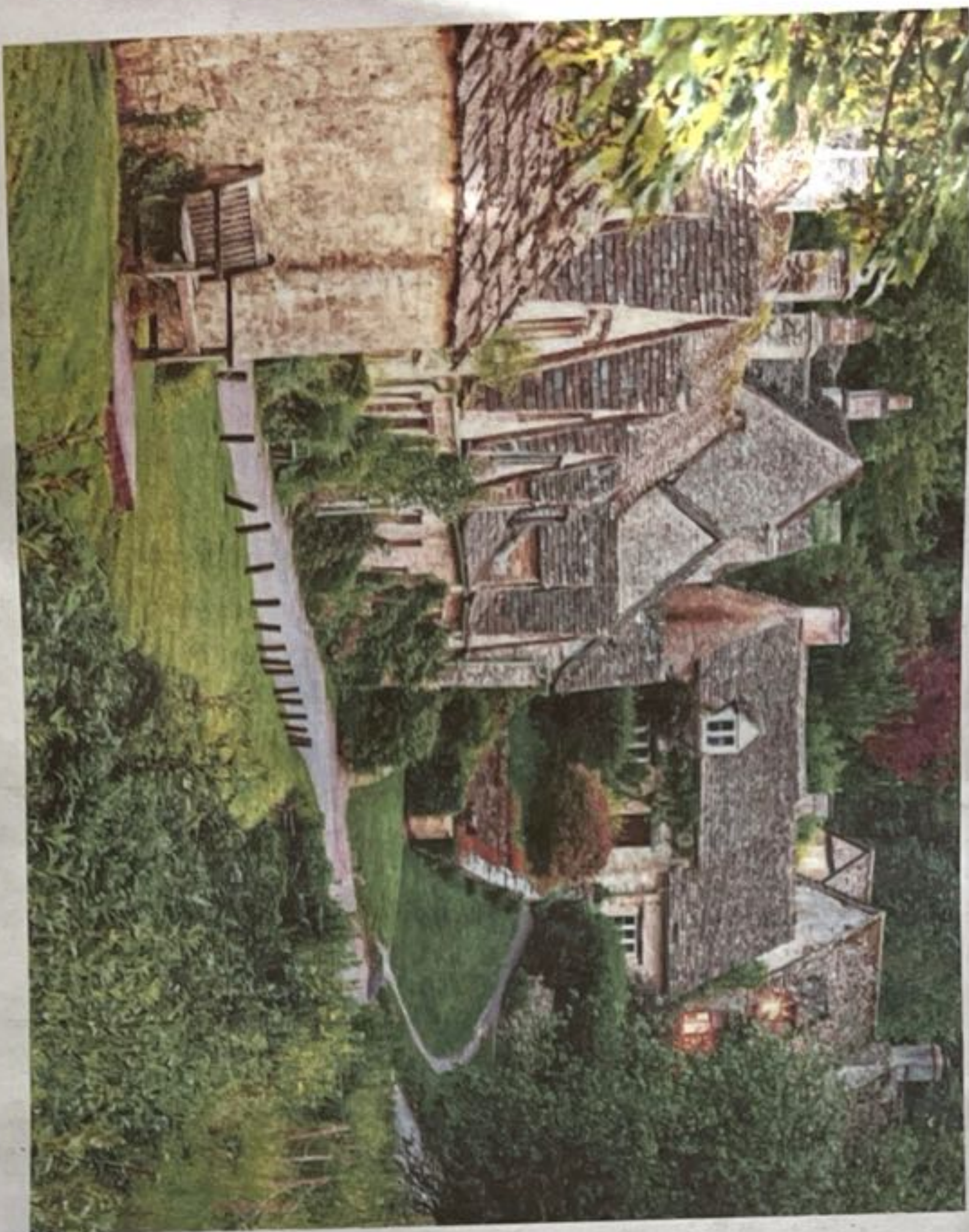
Ms Heng has a deep interest in retina lasers, ageing eye diseases (such as preventative therapy and treatment in AMD) and is also a leading expert in the screening and treatment of retinal vascular diseases including diabetic retinopathy and retinal vein occlusion. She's also an experienced minimally invasive cataract surgeon and specialises in complex cases with multiple pathologies. Ms Heng believes in personalised therapy and takes pride in advising her patients on treatments according to their disease, their needs and lifestyle.

● **Ms Heng consults privately at The London Clinic, 119 Harley Street, London W1G6AU and Moorfields Private, 50 New Cavendish Street, London W1G 8TL**
retina-eye.co.uk E: info@retina-eye.co.uk
T: 07886 677351

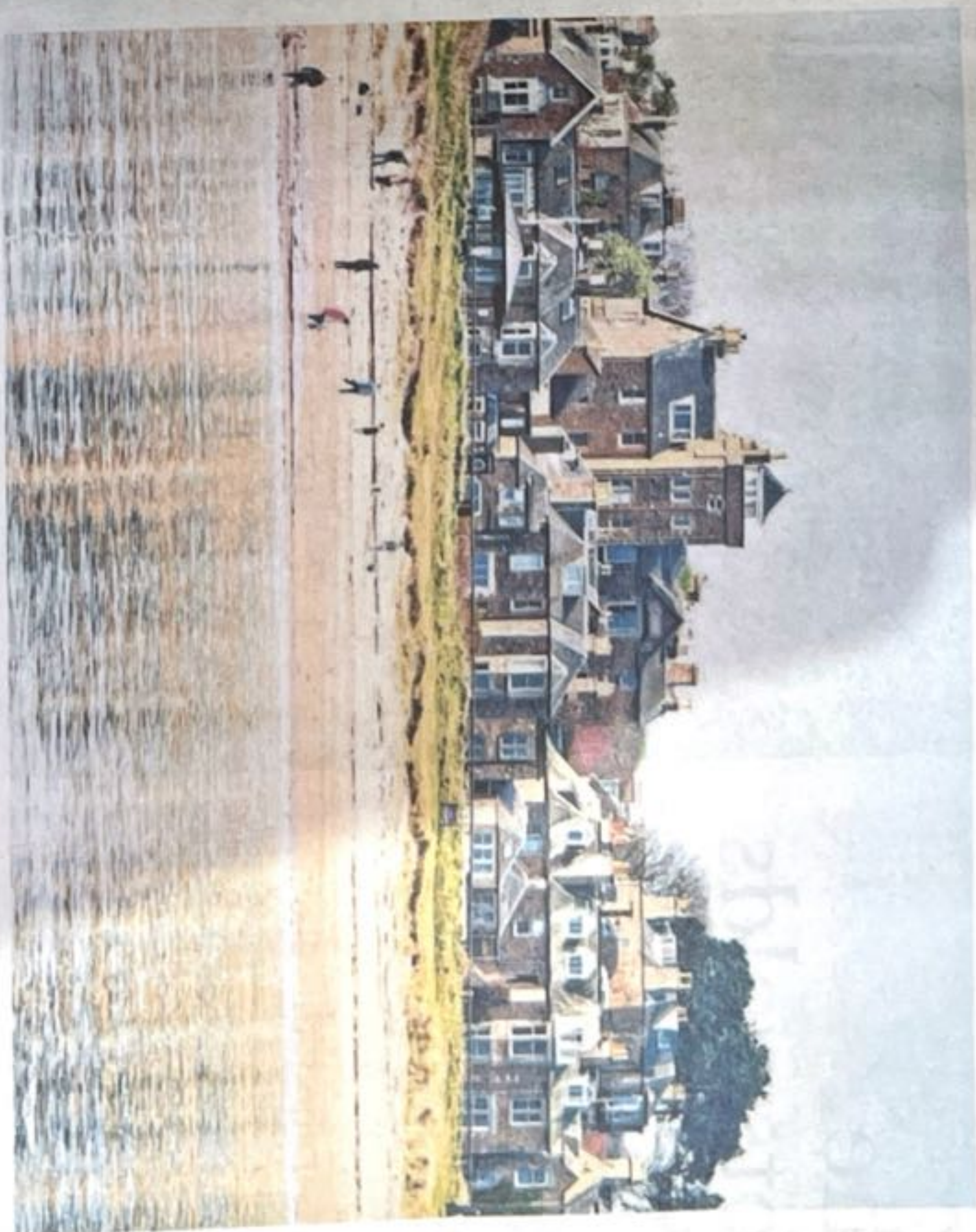


The Daily Telegraph

SATURDAY



THE COTSWOLDS



EAST LOTHIAN

